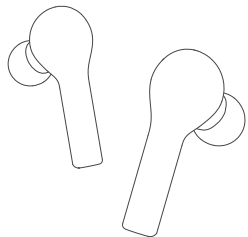


QCY



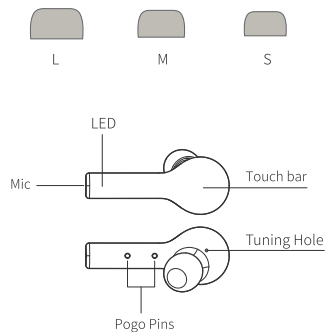
QCY-T5
TWS Bluetooth Earbuds



Official URL

Overview

Choose Your Eartips

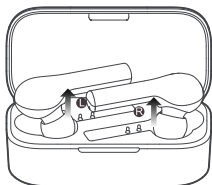


Please try medium eartips first as they fit most people.

How to Pair

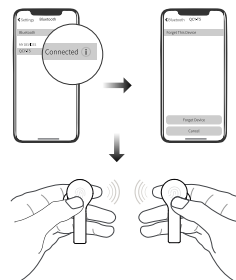
First Time Pairing:
1. Pick up both earbuds.
2. On cellphone, search for QCY-T5 and tap to connect.
*Once paired earbuds will auto power on upon picking up from the case. If earbuds fail to auto power on, please charge them and try again.

Switch Paired Device:
1. Turn off phoneA's Bluetooth faculty and earbuds will auto disconnect and enter into pairing mode.
2. On phoneB, search for QCY-T5 and tap to connect.
*Multi-point connection is not available. Earbuds will auto reconnect to phoneB upon powering up again.

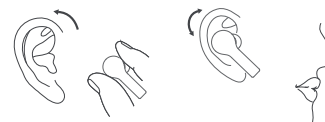


Factory Setting

(Try the following steps to fix connectivity issue)
Set to factory:
1. On cellphone, search for QCY-T5, tap and choose ignore or cancel pairing.
2. Pick up two earbuds, keep touching both bars for 8s or until LEDs glow red for 2s to power off.
3. Keep touching both bars for 10s or until LEDs blink red and green 3 times then blink red to set earbuds to factory.
*Please refer "First Time Pairing" to connect after factory setting.



How to Wear



1. Rotate earbud and pop it into your ear then shake head to check wearing stability.
2. Please adjust mic towards your mouth to gain better calling experience.

Three-way Calling & Switch

Earphones are connected with phoneA. Double press MFB to answer incoming call from phoneB. If another call is coming from phoneC in sync, double press MFB to put the first call on held while activating the second call. Hold MFB to switch between active call and held call.

Ignore the second call in three-way calling: earphones are connected with phoneA. Double press MFB to answer incoming call from phoneB. If another call is coming from phoneC in sync, hold MFB to ignore the second call while keeping the first call.

Mono Mode

1. Power off earbud then keep touching the bar for 5s to enter pairing mode (LED blinks red and green)
2. On cellphone, search for QCY_T5
3. Tap to connect

Charging Earbud

Push earbud into the case to charge. LED will glow solid red when charging and turn to green for 1 minute once top up.

Charging the Case

Charge the case via USB cable. LED will glow solid green when charging and turn off once top up.

Product Parameters

Model: In1925 Pairing name: QCY-T5
Bluetooth version: V5.0 Stand time: approx. 70hr
Charging time: approx. 2hr Music time: approx. 4 or 5hr
Talking time: approx. 4hr
Operation range: 10m(with no obstacle)
Battery type: li-ion
Battery capacity(earbud): 3.7V 40mAh
Battery capacity(charging case): 3.7V 380mAh
Input parameter(charging case): 5V == 500mA
Bluetooth profiles: HSP/HFP/A2DP/AVRCP

Function Introduction

Functions	Current status	Operation/result	LED	Prompt
Entering TWS Mode	Power-off with no connectivity record	Keep touching the bar for 1s to power on and earbud will auto enter pairing mode	LED blinks red and green	TONE
	Power-off then keep touching the bar for 5s to enter pairing mode	Double touch the bar to enter TWS mode	LED blink red and green then right LED turns off	\
Power-on	Power-off	Keep touching the bar for 1s	LED glows green for 1s	TONE
	Charging	Pick up earbuds from the case	LED glows green for 1s	
Power-off	Power-on	Keep touching the bar for 8s to power off earbud(two earbuds will power off, if earbuds are not connected to device)	LED glows red for 2s	TONE
		Pop earbud into the case to power off	LED glows red	
Remove connectivity record	Power-off	Keep touching the bar for 10s to remove connectivity record	LED blinks red and green 3 times then earbud turns off if power off both earbuds, then keep touching both bars for 10s to remove connectivity record. During the course, only one LED blinks at first, then both LEDs start to blink red and green for 3 times)	\
Answer/end call	Incoming call/calling	Double touch the bar	\	TONE
Ignore call	Incoming call	Keep touching the bar for 2s	\	TONE
Voice assistant	Connected	Triple touch left bar	\	TONE
Gaming mode	Playing/gaming	Triple touch right bar to switch on/off gaming mode	\	On: two beeps Off: three beeps
Music pause/play	Music playing	Double touch the bar to pause, double touch again to resume playing	\	\
Skip track	Music playing	Keep touching right/left bar to skip track forward/backward	\	\

Warranty Card

Warranty Period
12 months after you purchase this item.(or you may inquire your local shopper for more details.)
Free Service:
Supposing any defects caused by quality issues occur within the warranty period, please take this warranty card and purchase receipts to your distributor for free exchange service.

Model Number:
Date of Purchasing:
User's Name:
User's Phone:
User's Address:
Shop's Name:
Shop's Address:
Comments:

Free exchange service will not be accessed under following circumstances:
1. Damages caused unauthorized disassembly.
2. Defects or physical damages caused by leaking or dropping off.
3. Damages by act of God. Supposing your item is within any damages or defects except the above circumstances, please return to us or your distributor for free repairing.

FCC Statement

This equipment has been tested and found to comply with the limits for a Class B digital device, pursuant to Part 15 of the FCC Rules. These limits are designed to provide reasonable protection against harmful interference in a residential installation. This equipment generates uses and can radiate radio frequency energy and, if not installed and used in accordance with the instructions, may cause harmful interference to radio communications. However, there is no guarantee that interference will not occur in a particular installation. If this equipment does cause harmful interference to radio or television reception, which can be determined by turning the equipment off and on, the user is encouraged to try to correct the interference by one or more of the following measures:
- Reorient or relocate the receiving antenna.
- Increase the separation between the equipment and receiver.
- Connect the equipment into an outlet on a circuit different from that to which the receiver is connected.
- Consult the dealer or an experienced radio/TV technician for help.

This device complies with part 15 of the FCC Rules. Operation is subject to the following two conditions:
(1) This device may not cause harmful interference, and (2) this device must accept any interference received, including interference that may cause undesired operation.

Changes or modifications not expressly approved by the party responsible for compliance could void the user's authority to operate the equipment.

Hazardous substances and their contents in the item

Part Name	Hazardous Substances									
	Pb	Hg	Cd	Cr(VI)	PBB	PBDE	DIBP	DEHP	DBP	BBP
Main body	X	O	O	O	O	O	O	O	O	O
Battery	O	O	O	O	O	O	O	O	O	O
Ear tips	O	O	O	O	O	O	O	O	O	O
Accessories	O	O	O	O	O	O	O	O	O	O
Charging cable	X	O	O	O	O	O	O	O	O	O

This form is made by SJ/T 11364 regulation.
O: means that hazardous substance content in the homogeneous materials of this part is within the limits of (EU) 2015/863 regulation.
X: means that hazardous substance content in ,at least, one certain homogeneous material of this part is beyond the limits of (EU) 2015/863 regulation, but there is no mature alternative in the industry at present, it still conforms to the EU ROHS Directive in the scope of exemption.

Notes: Please arrange using time properly as your hearing may be damaged by using the device for a long time.
Perform standard: Q/HL 1-2019 ; Q/HL 2-2017
Manufacturer: Dongguan Hele Electronics Co., Ltd.
Address: Daojiao Town, Dongguan City, Guangdong, China

Tips

1. Before using the headset, please read the manual carefully and keep it for future references.
2. The headset need to be fully charged prior to first-time use.
3. If the headset is left unused for over two weeks, please recharge it periodically.
4. Please use the chargers made by qualified manufacturer.
5. If the headset cannot be found by your phone, please check whether it is in pairing mode; if left unconnected for a long while, the headset will exit pairing mode, please re-enter the mode; if a procedure error of your phone occurs, reboot it; if a procedure error of the headset occurs, reboot or reset it.

Caveats

1. Never disassemble or modify your headset for any reasons to avoid any damages and danger.
2. Do not store the headset in extreme temperatures (under 0°C or over 45°C).
3. Avoid using the indicator close to the eyes of children or animals.
4. Do not use this headset during a thunderstorm to avoid irregular function and increased risk of electric shock.
5. Do not use harsh chemicals or strong detergents to clean the headset.
6. Keep the headset dry.



CMIT ID: 2019DP6793